



Llywodraeth Cymru
Welsh Government

www.llyw.cymru
www.gov.wales

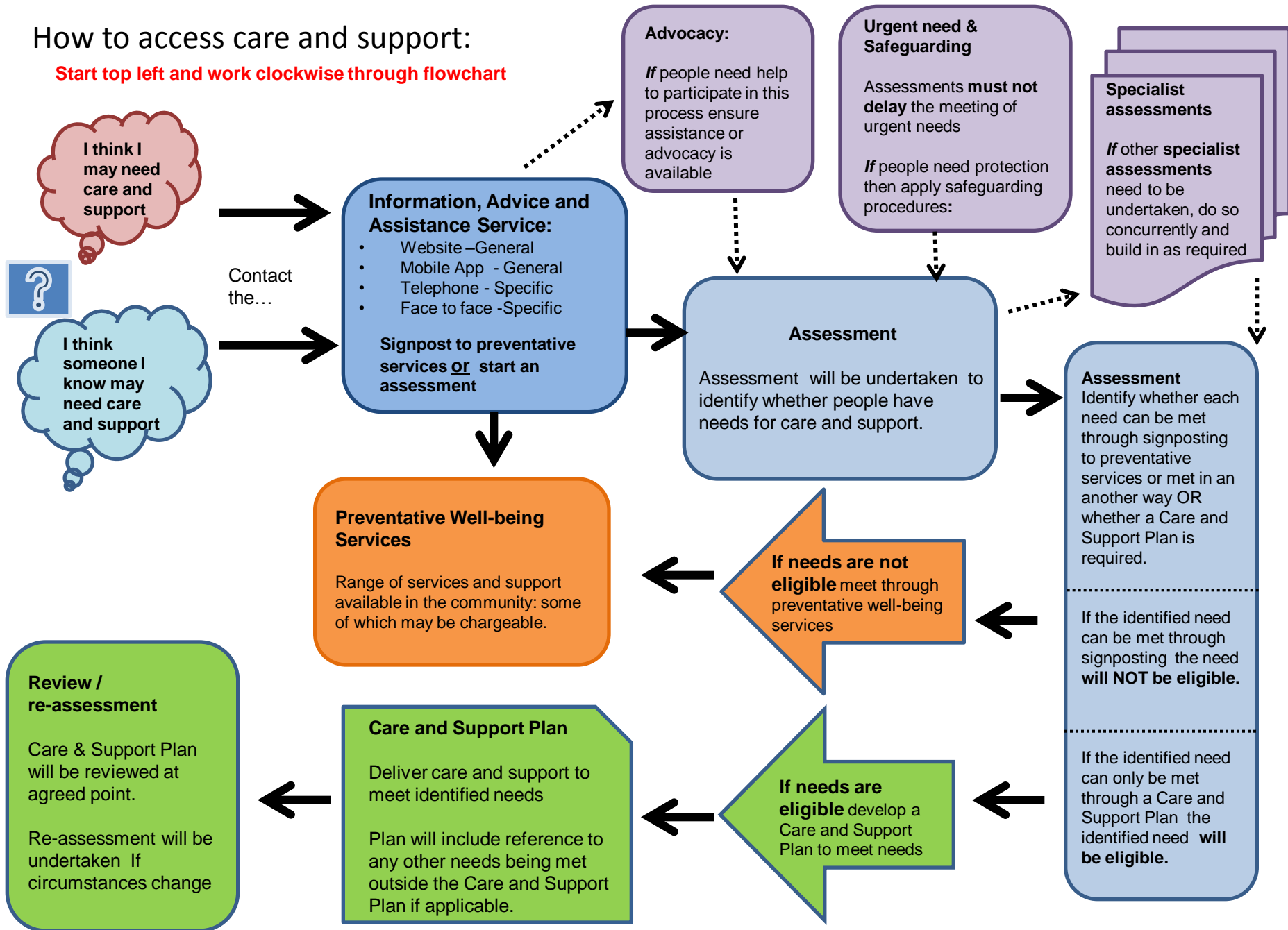
Llywodraeth Cymru
Welsh Government

Gweithdy 2: Aseu a Bodloni Anghenion Unigolion

Workshop 2: Assessment and Meeting the Needs of Individuals

How to access care and support:

Start top left and work clockwise through flowchart



Beth sydd wedi Newid?/What Changed?

- Dull cenedlaethol ar gyfer asesu a phennu cymhwysedd - beth sydd angen recordio
- Un broses asesu: yn lle'r prosesau syml a chymhleth

- National assessment and eligibility tool – what needs to be recorded
- One assessment process: replaced simple and complex

Beth sydd wedi Newid?/What Changed?

- Ystyriaethau ychwanegol ar gyfer plant
- Cydnabod cyfraniad gofalwyr
- Hyfforddiant a chymwysterau

- Additional considerations for children
- Carers contribution recognised
- Training and qualifications

Yr offeryn asesu/the assessment tool

Mae'r offeryn asesu a chymhwysra cenedlaethol yn cynnwys:

- y set ddata graidd sylfaenol genedlaethol;
- dadansoddiad wedi'i strwythuro o gwmpas 5 elfen yr asesiad; yn cynnwys datgan y canlyniadau sydd wedi'u pennu.

The national assessment and eligibility tool comprises:

- the national minimum core data set;
- an analysis structured around the 5 elements of the assessment; including setting out the outcomes which have been identified.

Beth sydd wedi Newid?/What Changed?

- | | |
|--|---|
| <ul style="list-style-type: none">• y camau i'w cymryd gan yr awdurdod lleol a phobl eraill i helpu'r unigolyn i sicrhau'r canlyniadau• sut mae'r ymarferydd yn asesu y bydd y cam gweithredu yn sicrhau'r canlyniad personol neu ddiwallu'r anghenion - i'r anghenion fydd yn cael eu diwallu trwy ddarparu gofal a chymorth a'r rheini drwy wasanaethau eraill. | <ul style="list-style-type: none">• the actions to be taken by the local authority and other persons to help the person achieve those outcomes• how the practitioner assesses the action will contribute to the achievement of the personal outcome or meet needs - needs to be met through the provision of care and support and through any other means. |
|--|---|

Gweithredu/Implementation

- Llif gwaith asesu a cymhwysedd – ADSS

- gofyniad gwybodaeth cyffredinol yn cael ei ddatblygu

- Cysylltiadau â'r Ddeddf Blant

- Integreiddio CCIS

- Assessment and eligibility workstream – ADSS

- Common information required under development

- Children Act linkages

- CCIS Integrating

Datblygu dull cenedlaethol ar gyfer asesu a phennu cymhwysedd – **Y Camau Nesaf** /National assessment and eligibility tool development **Next Steps**

↓ datblygu gofyniad gwybodaeth asesu ar gyfer hyfforddiant

↓ llif gwaith ADSS - datblygu deunyddiau am y tymor hir

↓ Deunyddiau hyfforddi

↓ integreiddio gyda CCIS

↓ assessment information required developed for training

↓ ADSS workstream develop material for the longer term

↓ Training materials

↓ integrated with CCIS

Trafodwch.../Discuss...

Beth arall sydd ei angen yn y dull asesu a phennu cymhwysedd?

- plant
- gofalwyr
- iechyd

What more needed in assessment and eligibility tool?

- children
- carers
- health

Taliadau Uniongyrchol

Direct Payments

Taliadau Uniongyrchol – Beth sydd wedi newid? / Direct Payments What's Changed?

- Rhaid i daliadau uniongyrchol gael eu hystyried yn rhan **annatod** o'r broses asesu a chynllunio gofal
- Mae **cymhwysra** a **hygyrchedd** taliadau uniongyrchol wedi cael ei ymestyn
- **Dyletswydd** i roi gwybodaeth a chyngor
- Direct payments must be seen as an **integral** part of the assessment and care planning process
- **Eligibility** and **accessibility** of direct payments has been extended
- **Duty** to provide information and advice

Beth mae'r newidiadau'n ei olygu'n ymarferol?/ What do the changes mean in practice?

- Mwy hyblyg, canolbwyntio ar y person a llai biwrocraataidd
- Rhaid eu cynnig ym mhob achos lle maent yn galluogi rhywun i gyflawni ei ganlyniadau lles personol
- More flexible, person centred and less bureaucratic
- Must be made available in all cases where they enable personal wellbeing outcomes to be achieved

Helpu ni i'ch Helpu Chi! / Help us to Help You!

- | | |
|---|---|
| <ul style="list-style-type: none">• Mae Deddf Gwasanaethau Cymdeithasol a Llesiant (Cymru) 2014 yn hyrwyddo'r defnydd o daliadau uniongyrchol• Ydych chi'n rhagweld unrhyw rwystrau? | <ul style="list-style-type: none">• The Social Services and Well-being (Wales) Act 2014 promotes the use of direct payments• Do you envisage any barriers? |
|---|---|

DIOLCH YN FAWR

THANK YOU VERY MUCH

SSWBIMPLEMENTATION@wales.gsi.gov.uk